

## Rules of conduct – personal precautions

- Keep in touch with your local government for information on potential flood risks. The communities maintain flood risk maps for public access.
- Take appropriate precautions against flood risks and for flood damage mitigation. Adapt the use of your lands and properties to potential flood risks.
- Acquaint yourself with your catchment area.
- Follow the weather reports and flood warnings regularly.
- Have candles ready and batteries for pocket torches and radios as flood events may lead to power failures.
- Respect flood barriers: do not use partially flooded streets or roads regardless of whether or not flood defence systems are in place.
- Be prepared for flooding and make the necessary arrangements early (medicine, food, hygienic articles, identity documents).

### Imprint

Published by: Landesamt für Umwelt und Geologie,  
Public Relations (Öffentlichkeitsarbeit)  
Zur Wetterwarte 11, 01109 Dresden

e-mail: [Abteilung1@fug.smul.sachsen.de](mailto:Abteilung1@fug.smul.sachsen.de)  
(no access for digital signatures or encrypted electronic documents)

Edited by: Landeshochwasserzentrum, Abt. Wasser, Abfall

Produced by: Michel Sandstein GmbH

Distributed by: Saxoprint GmbH, Enderstr. 94, 01257 Dresden  
Fax: +49 (0) 351 20 44 366, e-mail: [versand@saxoprint.de](mailto:versand@saxoprint.de)

Availability: This publication can be obtained at no cost from saxoprint GmbH.

Copyright: This publication is protected by copyright. All rights reserved to the publisher.

Print run: 1,000 copies

December 2005

Article No.: L II-3/5  
[www.umwelt.sachsen.de/lfug](http://www.umwelt.sachsen.de/lfug)

## How to obtain information on flood risks Saxony

Issue: December 2005

Adhesive labels for private use



[www.hochwasserzentrum.sachsen.de](http://www.hochwasserzentrum.sachsen.de)  
[www.umwelt.sachsen.de/lfug](http://www.umwelt.sachsen.de/lfug)

### Information

Current water levels and flow rates,  
flood warnings,  
flood forecasts (charts)

12/2005



Automated flood warnings (flood line)  
**(03 51) 892 82 61**

### Information

Latest information on flood warnings  
in force with status and trends

Automated water level readings  
Saxon Flood Centre

**(03 51) 892 82 60**

### Information

Current water levels

Local Elbe river levels  
**(local area code) 194 29**

### Information

Current water level

12/2005



**MDR videotext starting on page 530**

### Information

Current water levels

12/2005



### Information

Current flood status reports  
and weather risks



Das Lebensministerium



## Saxon Flood Centre Information

Flood Information  
& Alert Service

Freistaat  Sachsen

Saxon State Agency for Environment and Geology

## Floods

Floods are natural processes that are caused by heavy or permanent rainfalls or snowmelt and can affect all flowing waters in Saxony. No technical equipment or construction offers absolute safety from flooding and flood damage. A well-working flood information & alert service with an integrated early warning system gives information on rising water levels in good time or provides status reports and forecasts of current flood events. The aim is to enable all persons and parties interested to take early precautions to protect themselves and their assets at risk.

## Which areas are covered by the flood information service?

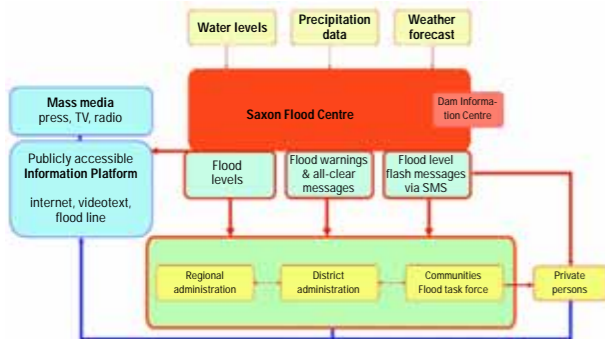
- The flood information service covers the whole territory of Saxony.
- Relevant flood information (warnings/all-clear/flash messages) is issued for the following catchment areas in the Saxon territory:
  - Elbe stream
  - Upper tributaries to the Elbe (e.g. Gottleuba, Wesenitz, Müglitz, Weisseritz, Triebisch, Döllnitz rivers)
  - Schwarze Elster
  - Mulde rivers and their tributaries (Zwickauer Mulde, Freiberger Mulde, Vereinigte Mulde)
  - Weisse Elster
  - Spree
  - Lusatian Neisse

The catchment area, also known as river basin, watershed or drainage area, refers to the main water course with all its direct and indirect inflows and tributaries. For hydrological reasons, the Elbe stream and the tributaries of the upper course of the Elbe are regarded as two separate catchment areas.

**Everyone at risk of flooding must take precautions to ensure personal safety.**

## Who provides flood information?

- The flood information & alert service in the Free State of Saxony is headed by the Flood Control Centre based in the Saxon State Agency for Environment and Geology.
- The Saxon Flood Centre provides all relevant flood information directly to each authority with flood defence responsibilities as well as to any third parties (private persons) at special risk of flooding.
- All flood messages and warnings are constantly available on the information platform of the Saxon Flood Centre.



## What kinds of flood information are available?

### Flood levels

are up-to-date readings that are distributed automatically by more than 100 high-water level gauges when defined alarm stages (flood level thresholds) are reached.

### Flood warnings/all-clear messages

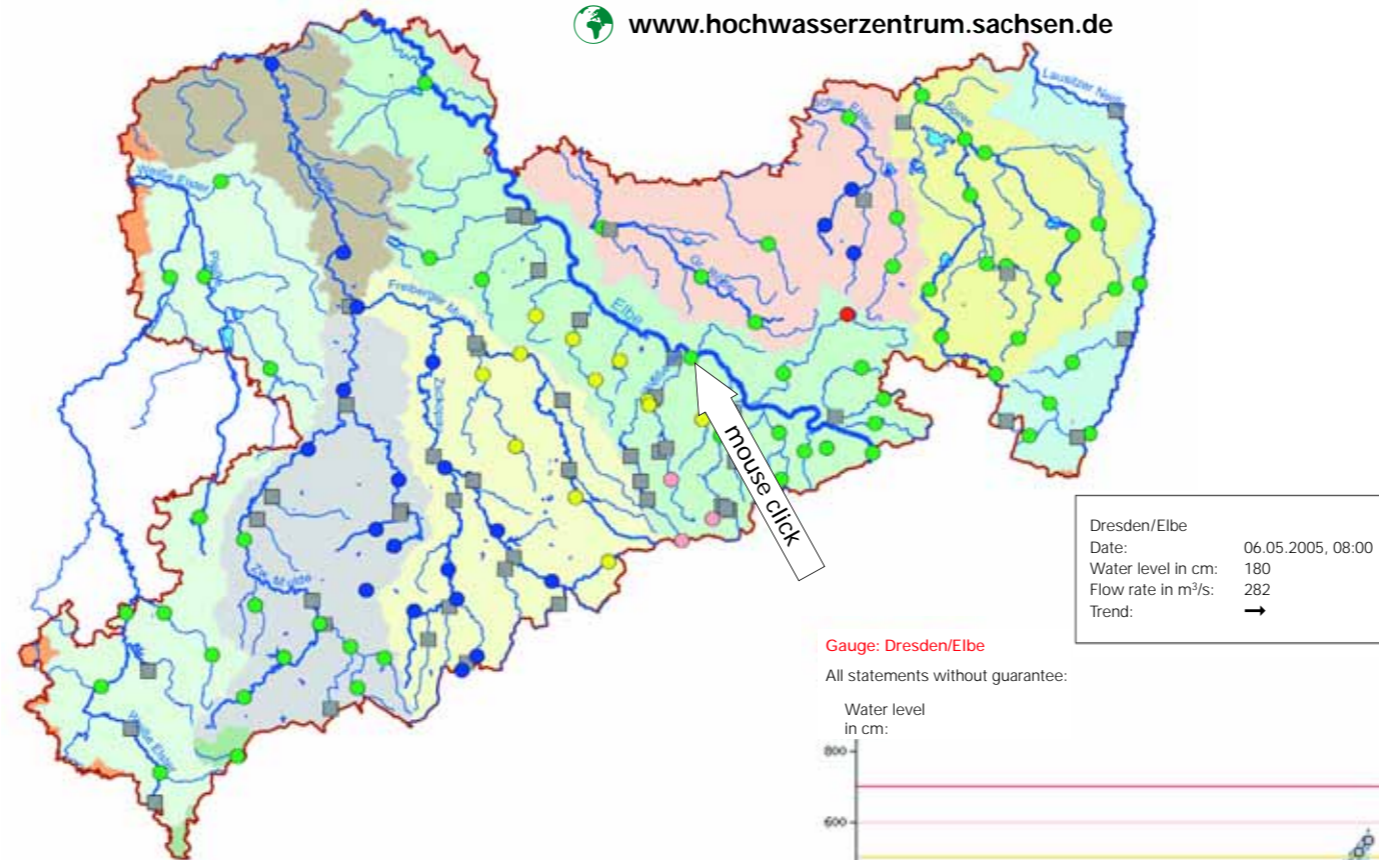
mean evaluated data on imminent flood risks in connection with status and trend information on the meteorological and hydrological situation.

### Flood flash messages

are provided via SMS for immediate information on starting or worsening flood risks. Receipt of the information must be acknowledged within one hour, otherwise the responsible supervising authority will receive a message flow error feedback for possible irregularities or improper flow of information.

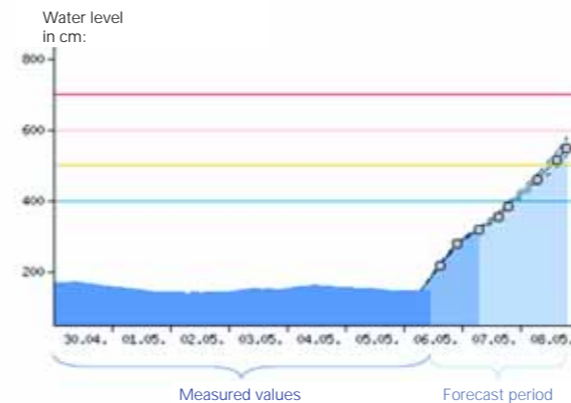
## Information Platform of the Saxon Flood Centre

[www.hochwasserzentrum.sachsen.de](http://www.hochwasserzentrum.sachsen.de)



Gauge: Dresden/Elbe

All statements without guarantee:



- The internet platform of the Saxon Flood Centre issues current water levels and flow rates from flood level gauges.
- All level gauges are shown in location maps or catchment tables.
- In case of a flood event, specific colour codes (1 2 3 4) identify the alarm stages reached at each of the level gauges and trend charts are provided for selected gauge locations. In addition, there are specific flood warnings for each catchment area.
- Also, automated voice message services issue latest information on water levels and hydrological conditions.

+49 (0) 351 89 28-261  
+49 (0) 351 89 28-260

## What do the alarm stages mean?

There are four alarm stages with the following key items:

### Alarm stage 1

Bank-full stage, first overflows

### Alarm stage 2

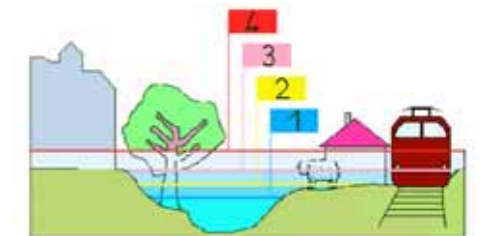
Flooding of agricultural and forest lands and isolated buildings; slight traffic disruption on roads; closure of individual roads required

### Alarm stage 3

Flooding of parts of connected built-up zones, trunk roads and railway lines

### Alarm stage 4

Flooding of larger built-up areas with very high damage to property and imminent danger to human and animal life.



## Who is your local responsible for flood defence?

- The communities inform the public immediately on flood risks and initiate flood defence measures.
- Flood-prone communities maintain specific alerting system documents containing detailed lists of owners, holders and operators of buildings, plants and facilities at risk of flooding; energy and water providers; sewage and waste management companies.
- The alerting documentation includes organizational charts with interlinks between flood messages and concrete actions. This enables the local governments to take immediate and effective measures to avoid and mitigate flood damage.