

Technical Notes

M11 Urban Atlas

Downstream detailed classification

Chemnitz

Prepared by:
Robert Schenkel, H.G.Geo Data Solutions GmbH

04.03.2009



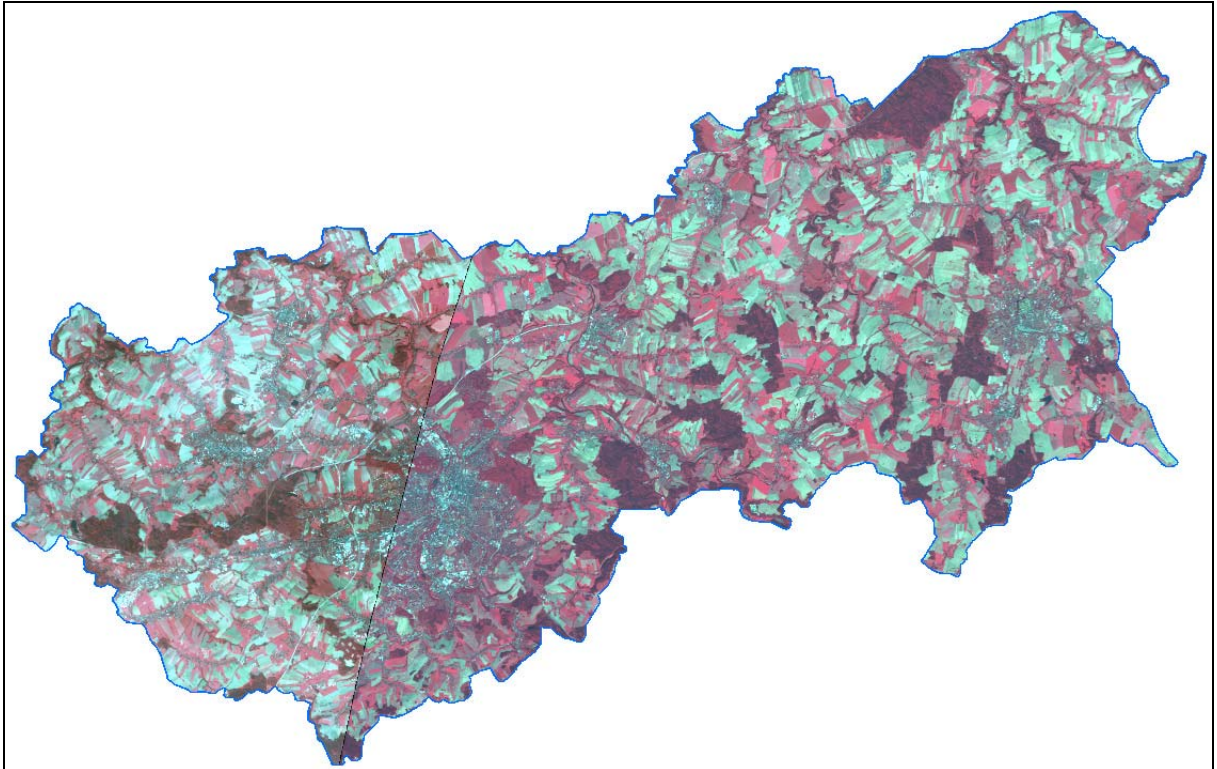
H.G.Geo Data Solutions GmbH
Talstraße 84
07743 Jena
Germany, EU

Contact: h.g.gds-schenkel@arcor.de

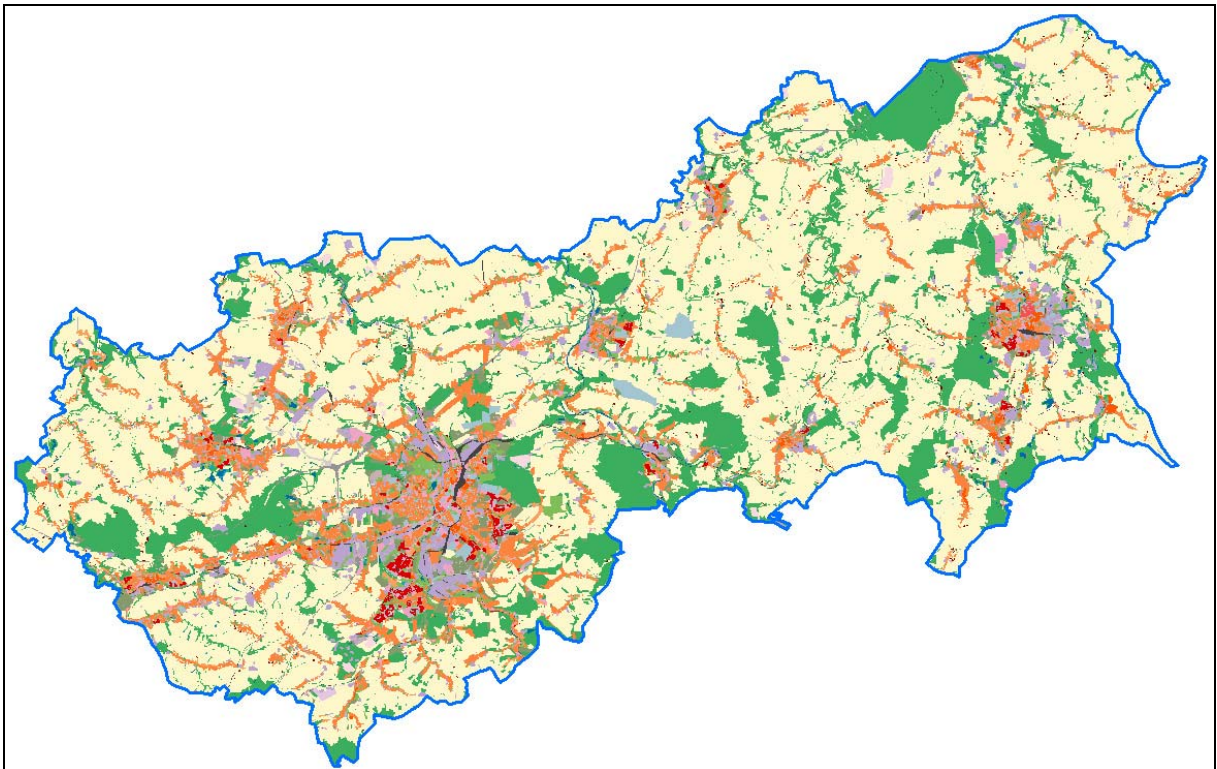
TABLE OF CONTENTS

1	Spatial Coverage	1
2	Metadata	2
3	Nomenclature	3

1 SPATIAL COVERAGE



1: Coverage Chemnitz EO-Data



2: Coverage Chemnitz M11 V3.2 (colour-coded preview)

2 METADATA

Map projection	UTM, Zone 32, North, spheroid: WGS84
Year of production	2009
Mapping Guide Version	3.2 with enhancements
Mapping Area	1113,6 km ²
Service Provider	H.G. Geo Data Solutions GmbH, Germany
Image source	SPOT 5
Date of image aquisition	2005-10-08, 2005-09-22
Ancilliary data used for production	<ol style="list-style-type: none">1. Topographic map 1:250002. Digital topographic map (ATKIS)3. Digital cadastral map (ALK)

The nomenclature of version 3.2 is slightly modified for the downstream product. Following modifications are applied to the mapping guide V3.2:

- Recoding of classes (ref. Fig. 3)
- Application of FTS-Soil sealing Layer for the classes 111xx and 112xx as in mapping guide version I1.2

3 NOMENCLATURE

ARTIFICIAL SURFACES	
URBAN FABRIC	
■	11110 Central Business District (CBD), mixed use, very dense urban fabric
■	11120 Informal continuous dense settlement
■	11210 Mixed use, dense urban fabric (S.L.: 50% - 80%)
■	11220 Primarily residential, medium density urban fabric (S.L.: 30% - 50%)
■	11230 Primarily residential, low density urban fabric (S.L.: 10% - 30%)
■	11240 Informal discontinuous residential structures
SPECIAL URBAN FEATURES	
■	11310 Apartment blocks with communal open space
■	11320 Isolated structures
INDUSTRIAL, COMMERCIAL, TRANSPORT	
■	12110 Industrial uses and related areas
■	12120 Commercial uses, retail parks and related areas
■	12130 Public, military and private services
■	12140 Water supply infrastructure, sea walls and flood defences
■	12210 Fast transit roads and associated land
■	12220 Other roads and associated land
■	12230 Railways and associated land
■	12300 Port areas
■	12400 Airports
MINE, DUMP, CONSTRUCTION	
■	13100 Mineral extraction and dump sites
■	13300 Construction sites
■	13400 Land without current use
ARTIFICIAL VEGETATED AREAS	
■	14100 Green urban areas
■	14200 Sports and leisure facilities
AGRICULTURAL, NATURAL AND SEMI-NATURAL AREAS	
■	20000 Agricultural Areas
■	30000 Forests
■	40000 Wetlands
■	50000 Water

3: modified nomenclature V3.2